

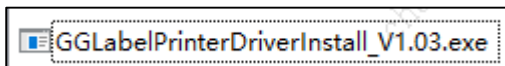
Driver installation for GG-D1180CW Printer

(USB Connection printing method)

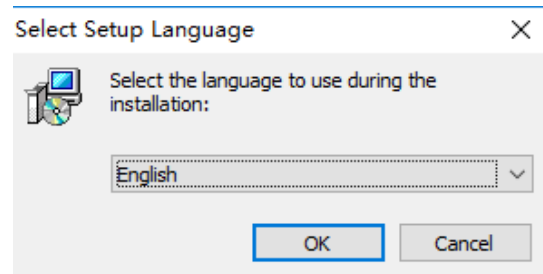
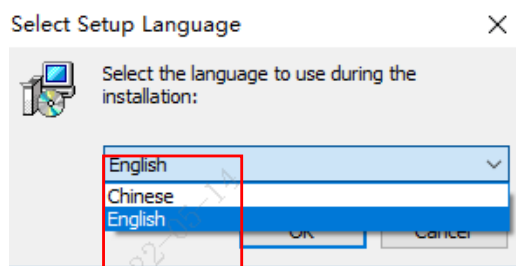
I. Install printer drivers.

Connect the printer to PC with USB cable, and connect the power line of the printer

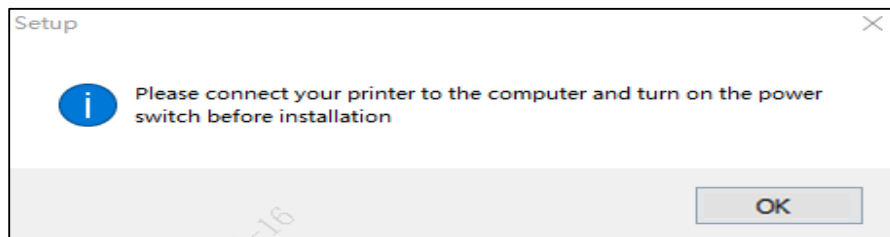
Double-click to open the GG Label Printer Driver Install icon



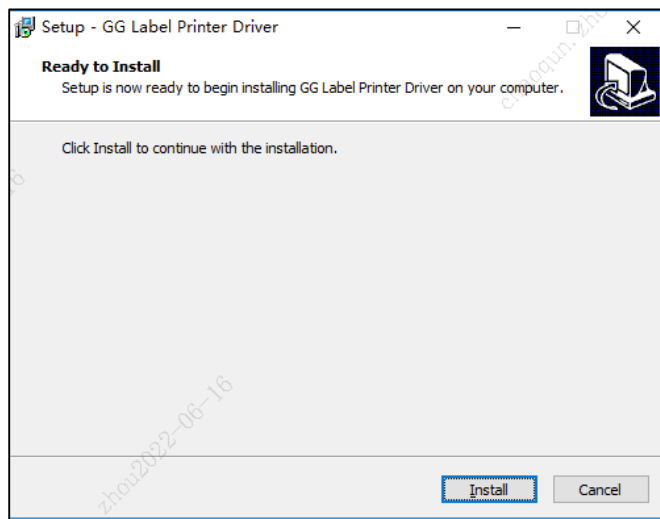
Choose the right language and click OK



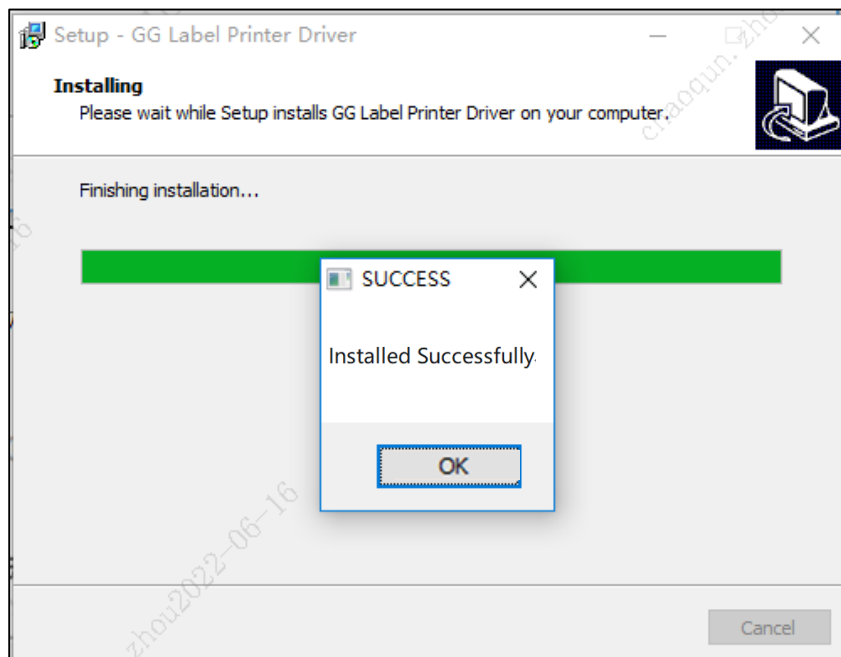
According to the hint and turn on the printer power switch



Click on the install



The printer driver installation is completed , then click OK



Click Finish

