

Network port connection printing method for GG-AT 90DW

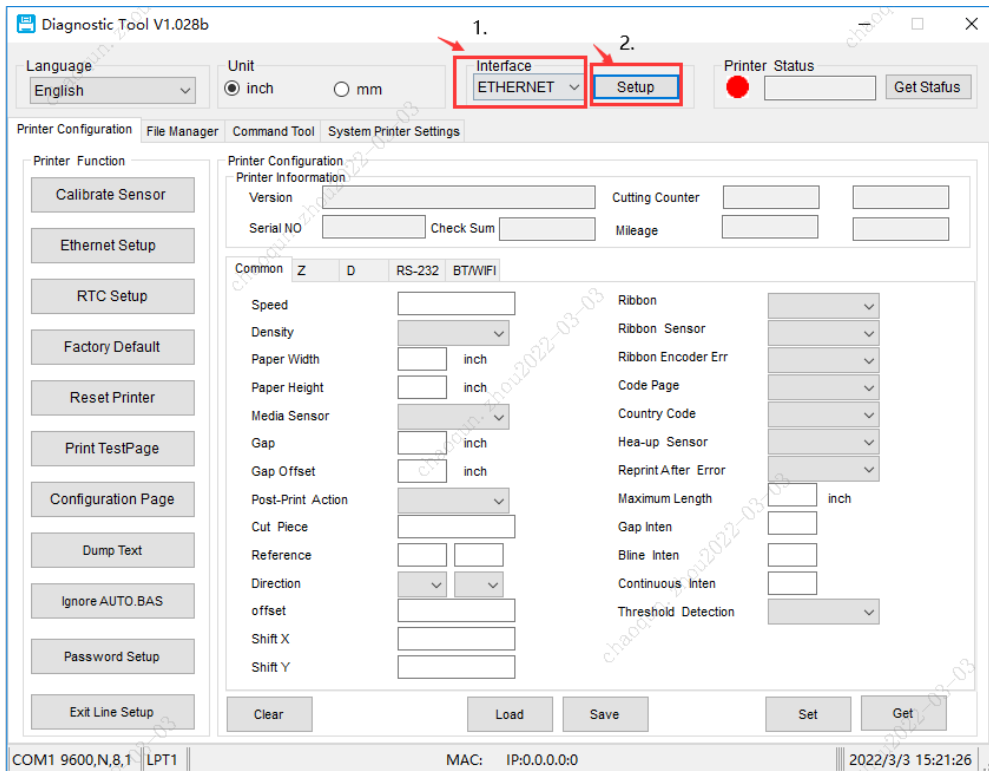
I .Network port connection

1. Use the tools

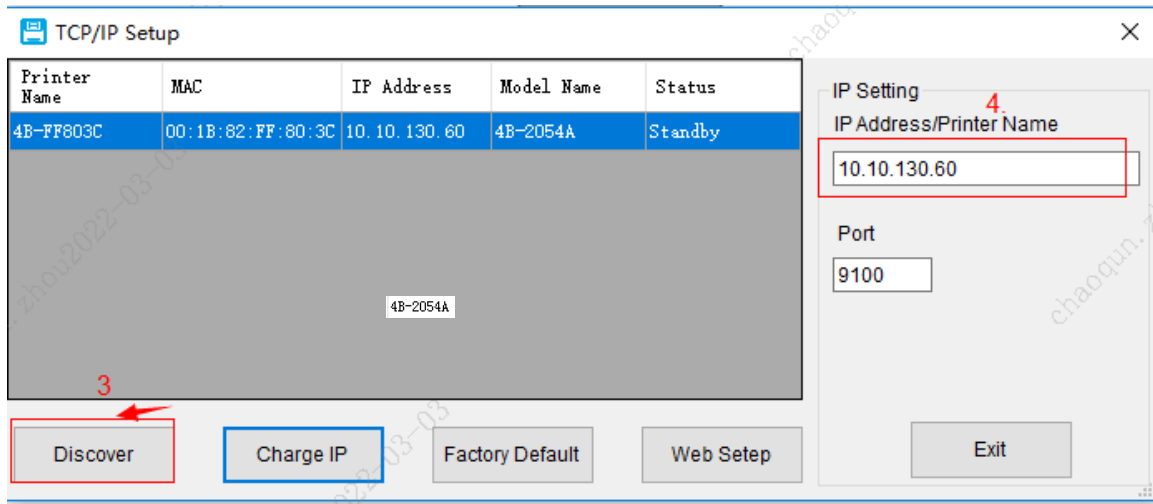
- a) We need *Diagnostic Tool V1.019b* Version of the above.
- b) The printer driver needs to be pre-installed on the computer.

2. The printer connects to the LAN over a wireless network.

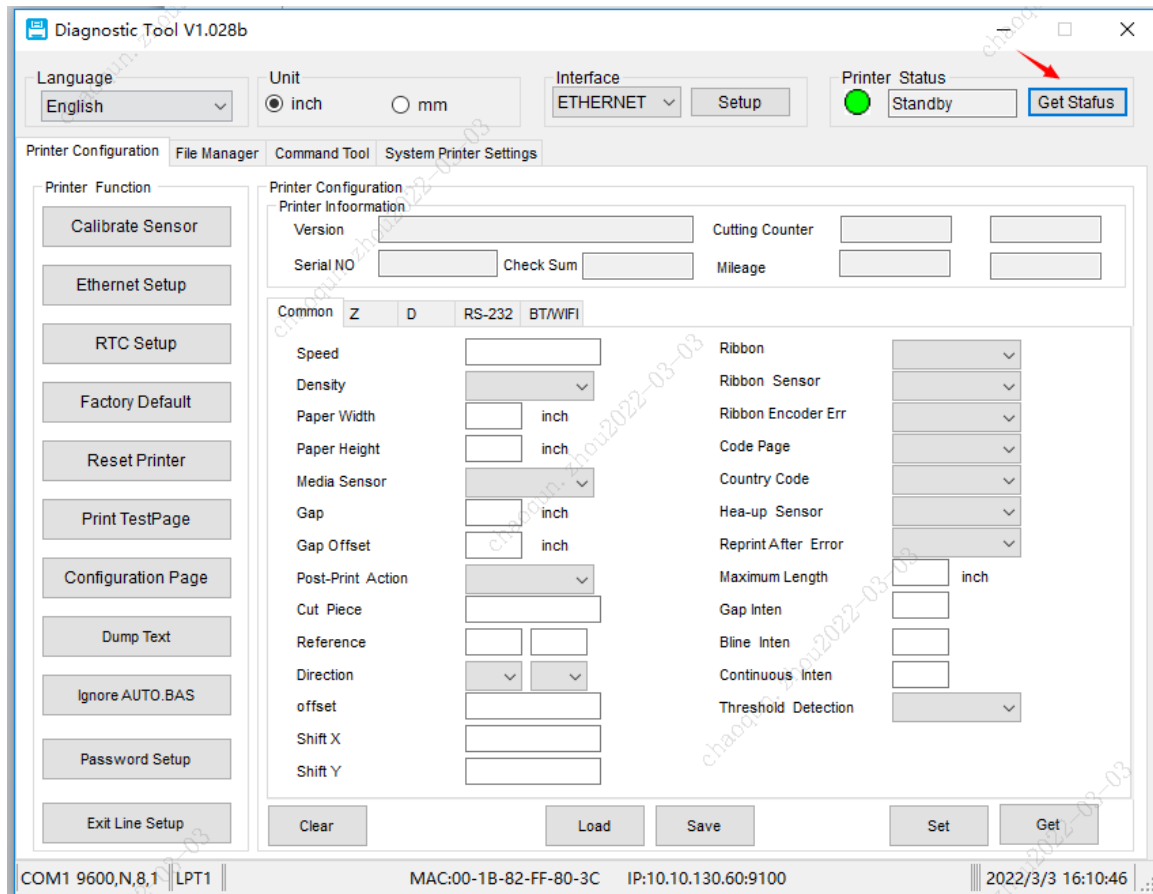
- a) Use USB port to connect printer and PC.
- b) Open the Diagnostic Tool, On Interface page, select Internet and click Set up.



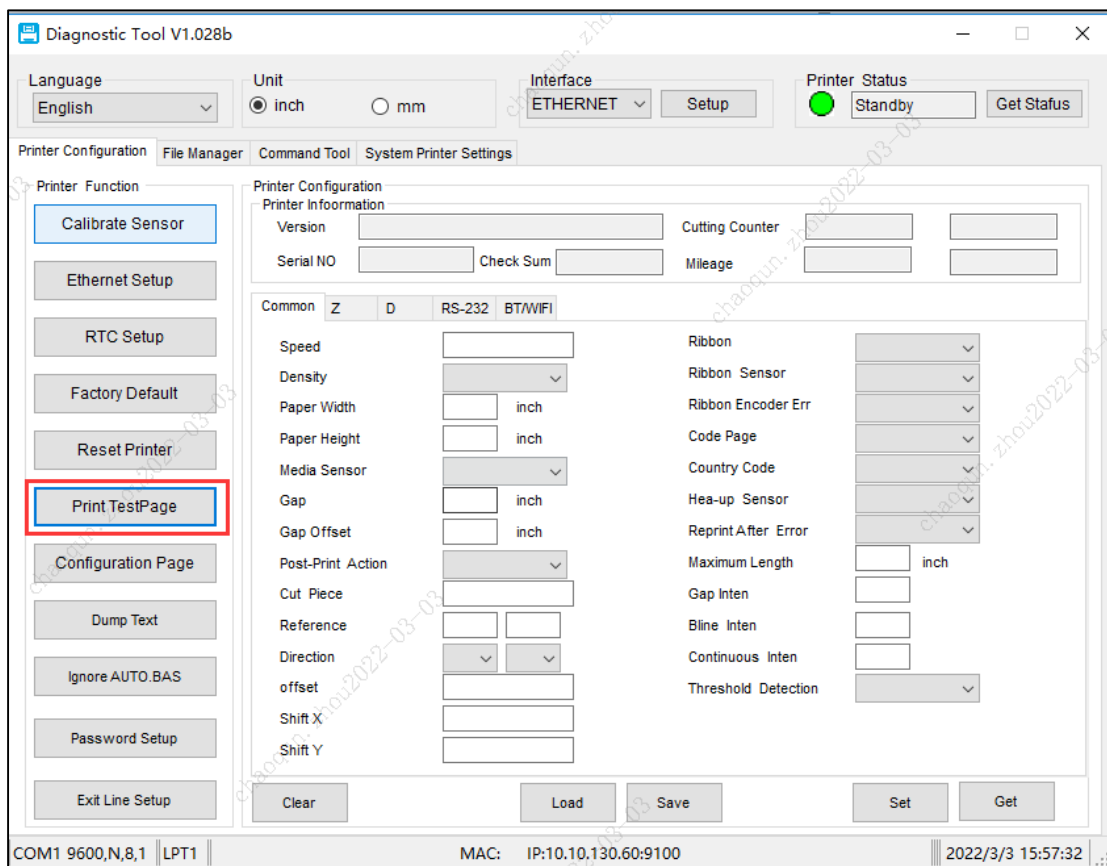
- c) Click to discover, and after the IP address comes out, click on the lower right corner to leave.



- d) Return to main page click “Get Stafus” at the upper right corner, it reveals green standby.

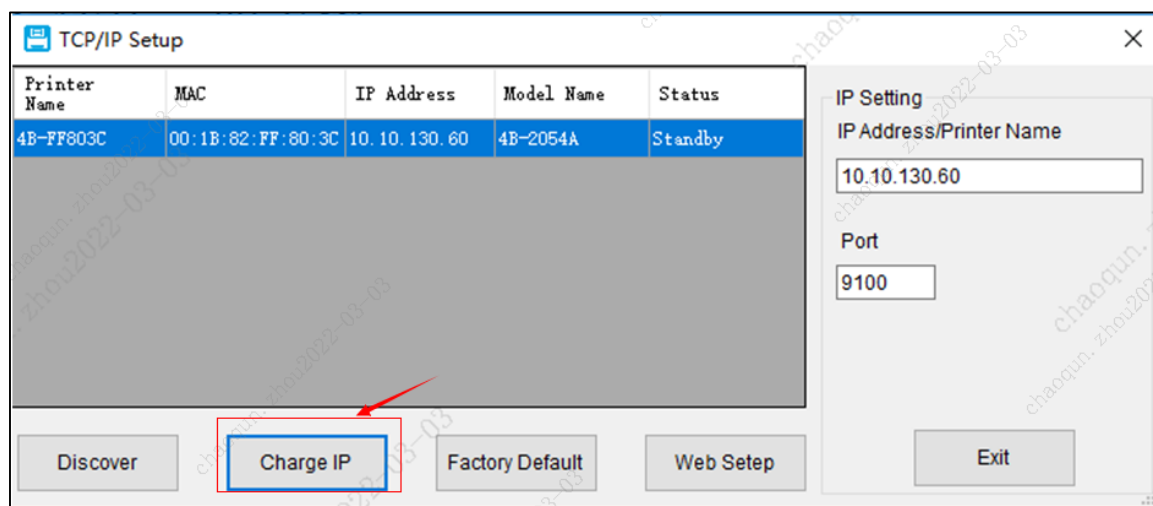


- e) Click “Print Testpage” on left side, If the machine can print the test page normally, it indicates that the printer IP address is OK.

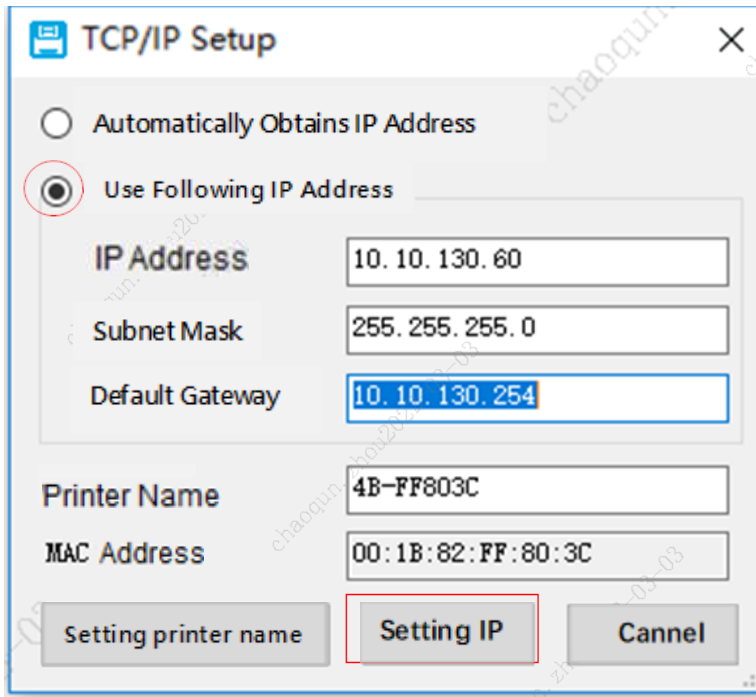


If you click the print test page and no content is printed, you can manually connect the IP address as follows:

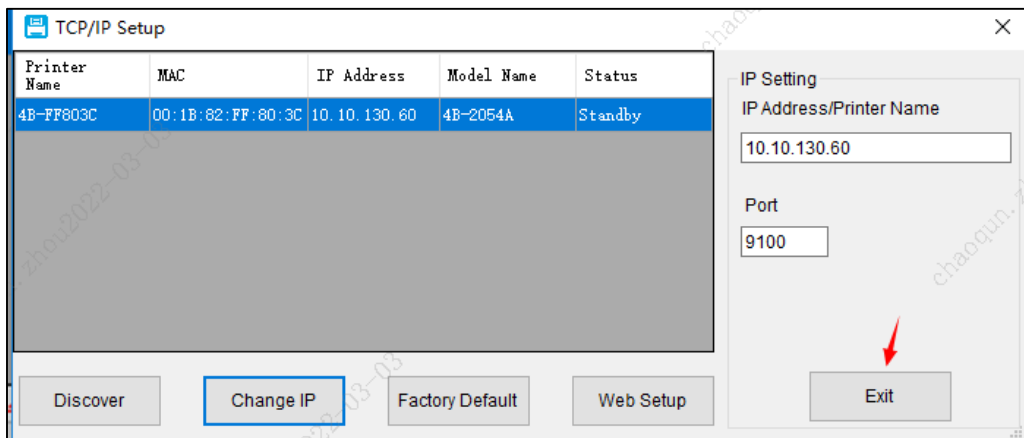
Click Change IP



If the 10.10.130.60 IP diagnosed is not used by other people, click "Use following IP address" and then click "Setting IP"

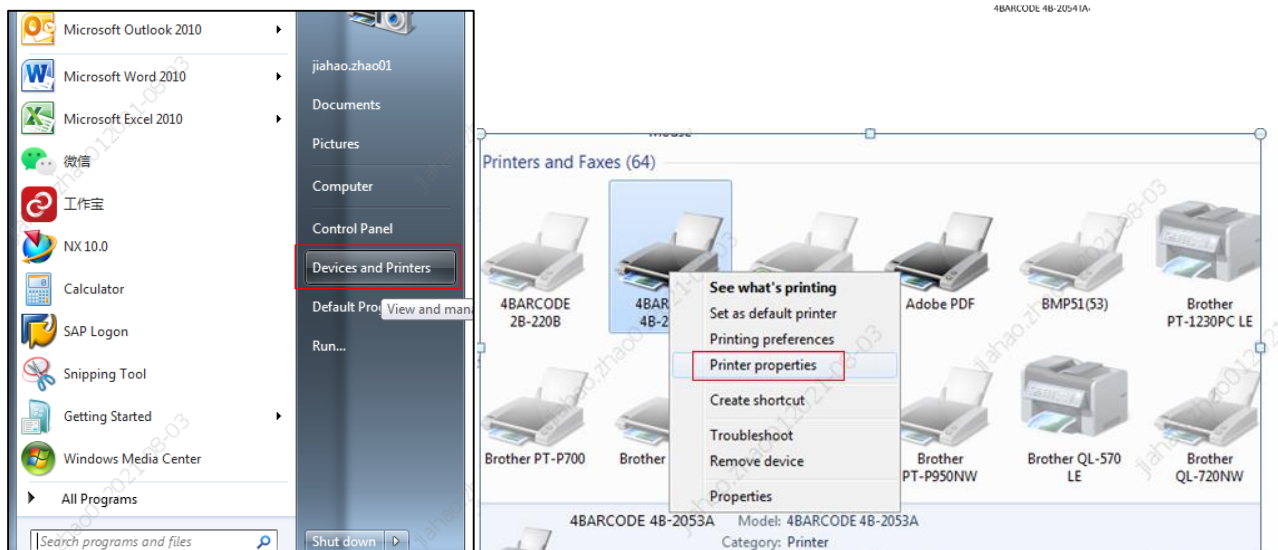


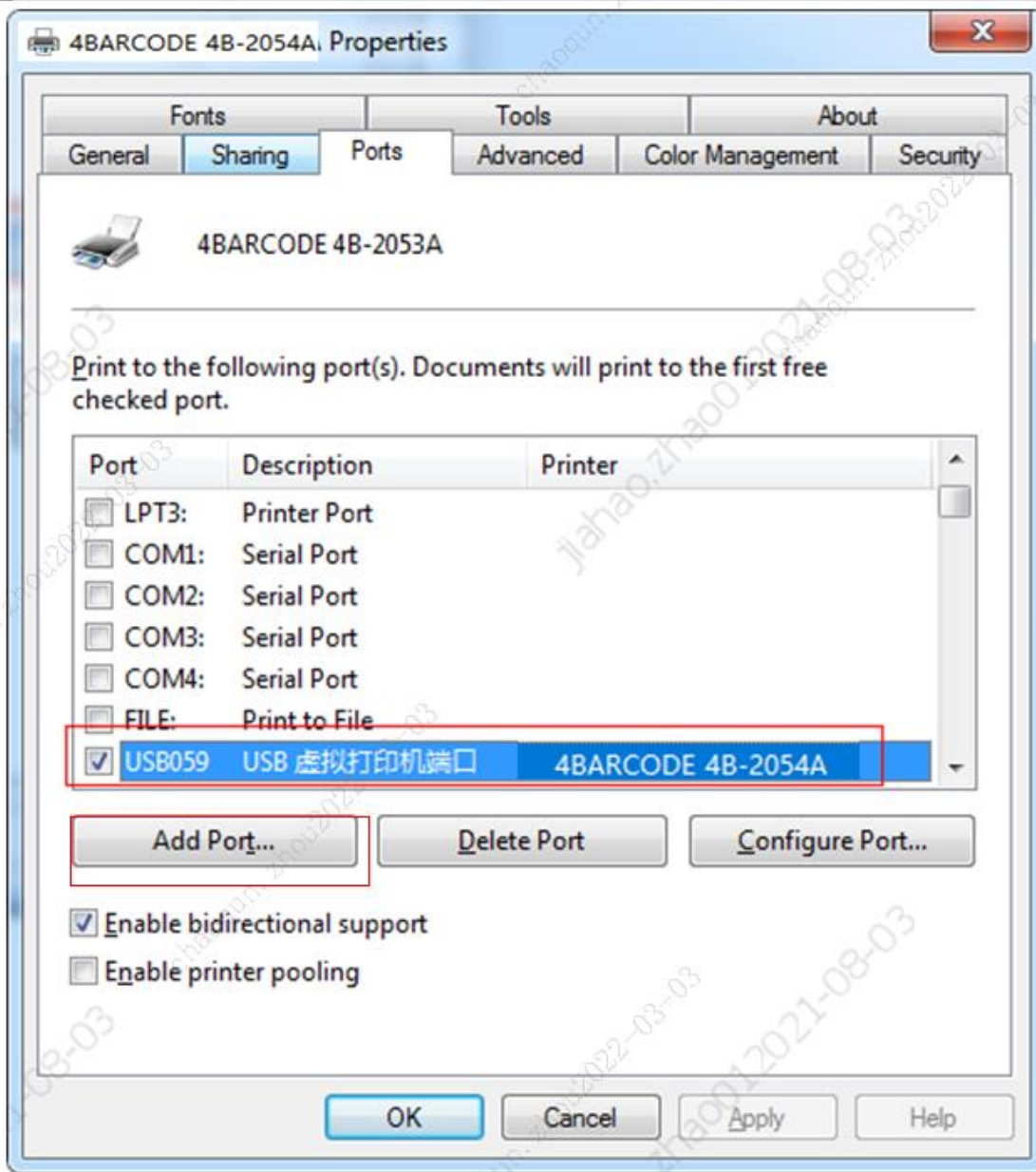
After returning to the main page, click "Exit". Return to the above steps D) and E), click the Print test page, and the content that can be printed indicates that IP setting is OK.



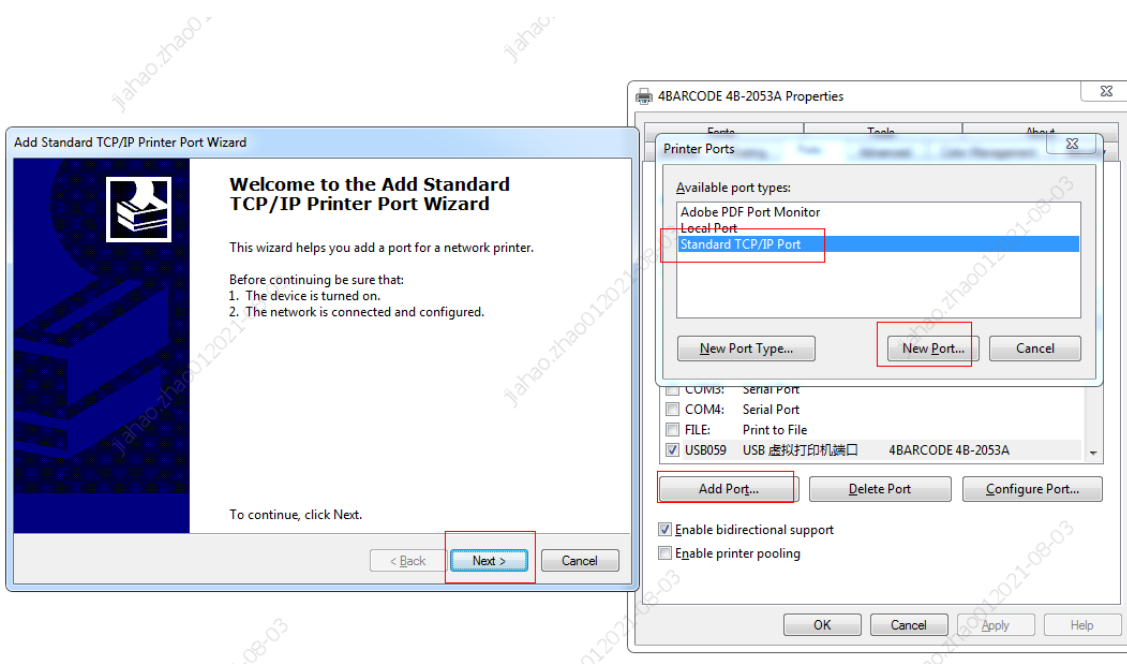
II. Set up the driver to connect to the printer over the network

Open printer properties in Printer Management and select ports.





Choose Add Port



Click Next and enter the IP address and port name. The IP address corresponds to the IP address read by the diagnostic tool.

Add Standard TCP/IP Printer Port Wizard

Add port
For which device do you want to add a port?

Enter the Printer Name or IP address, and a port name for the desired device.

Printer Name or IP Address: 10.10.130.60

Port Name: 10.10.130.60_1

< Back Next > Cancel

During the driver connection process, a page will appear indicating that the device cannot be connected. Please select user-defined device type and click Next to complete the driver connection

Add Standard TCP/IP Printer Port Wizard

Additional port information required
The device could not be identified.

The device is not found on the network. Be sure that:

1. The device is turned on.
2. The network is connected.
3. The device is properly configured.
4. The address on the previous page is correct.

If you think the address is not correct, click Back to return to the previous page. Then correct the address and perform another search on the network. If you are sure the address is correct, select the device type below.

Device Type

Standard Generic Network Card

Custom Settings...

< Back Next > Cancel

You can also use *Bartender* editing software to print after the port is added.

If normal printing cannot occur during the first connection, double-click the printer icon at the lower right corner, select printer in the popup picture frame, and remove the “√” in front of “Offline use printer” below.



4BARCODE 4B-2054A

Printer (P) document (D) check (V)

Connection (O)

Set to the default printer (T) printing

Update driver (D)
suspend print cancel all documents (A) (L)

Shared (H)...

Offline use printer (U)

Properties (R)

Closed (C)

状态	所有者	页数	大小	提交时间
错误 - 正...	chaoqun.z...	1	64.0 KB	16:41:52 2022/3/...