

WIFI Connection Instruction for GG-AH-10DW

I. Use the tools

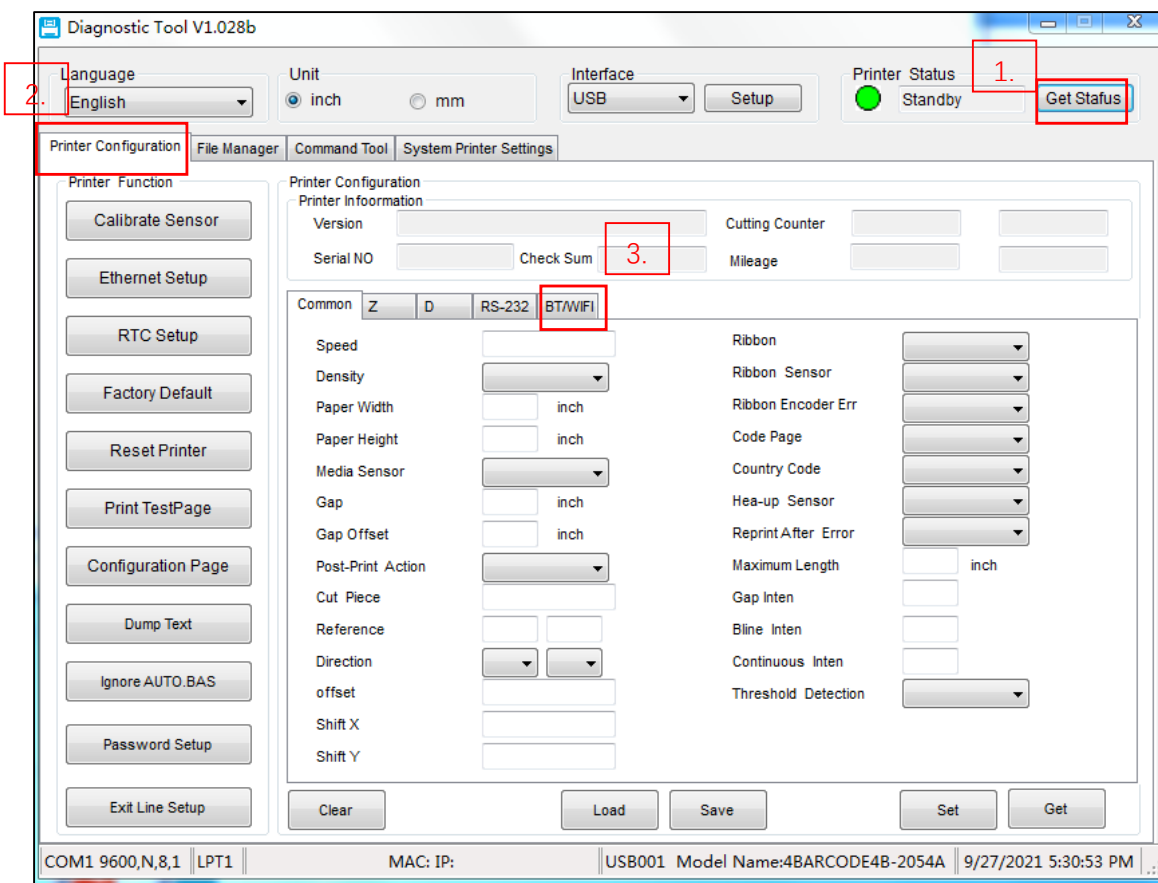
a) We need *Diagnostic Tool V1.019b* Version of the above.

b) The printer driver needs to be pre-installed on the computer.

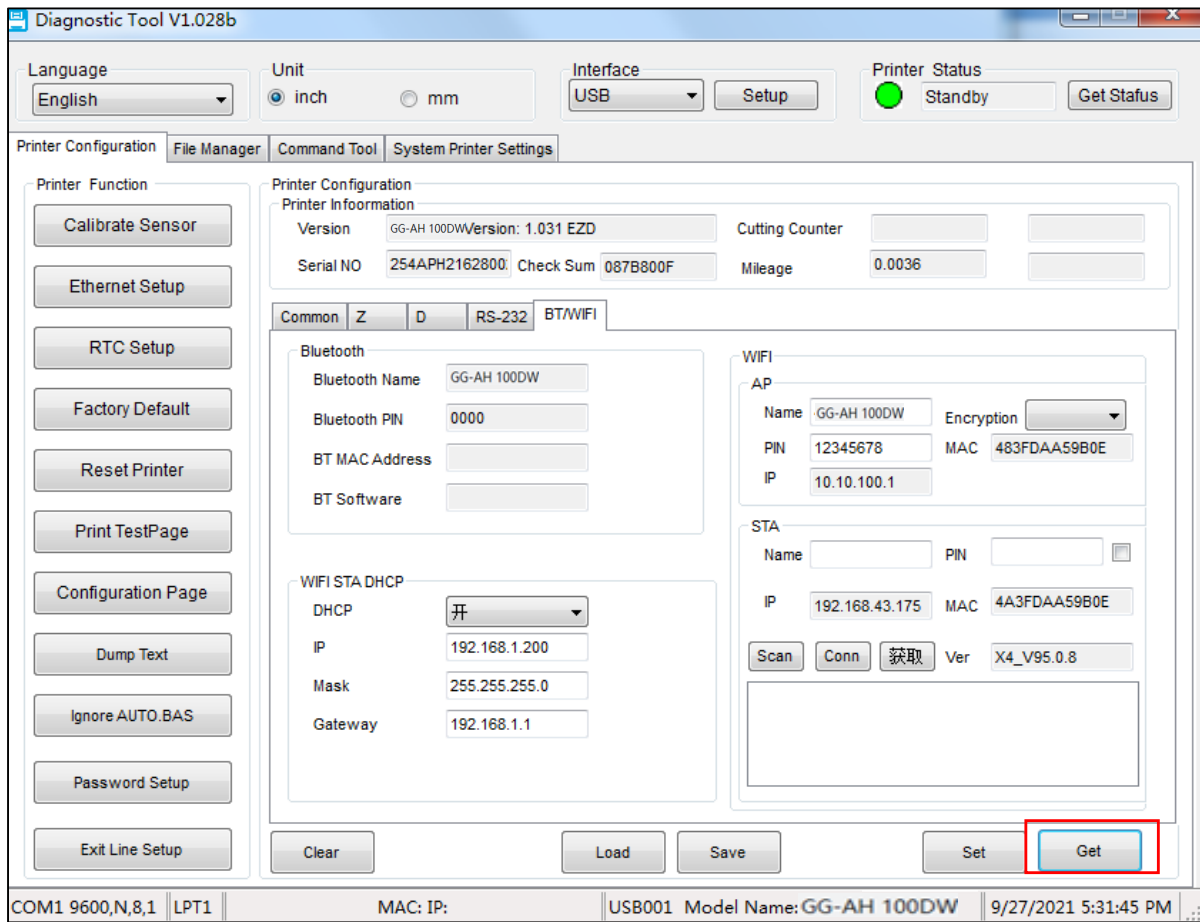
II. The printer connects to the LAN over a wireless network.

a) Use USB port to connect printer and PC

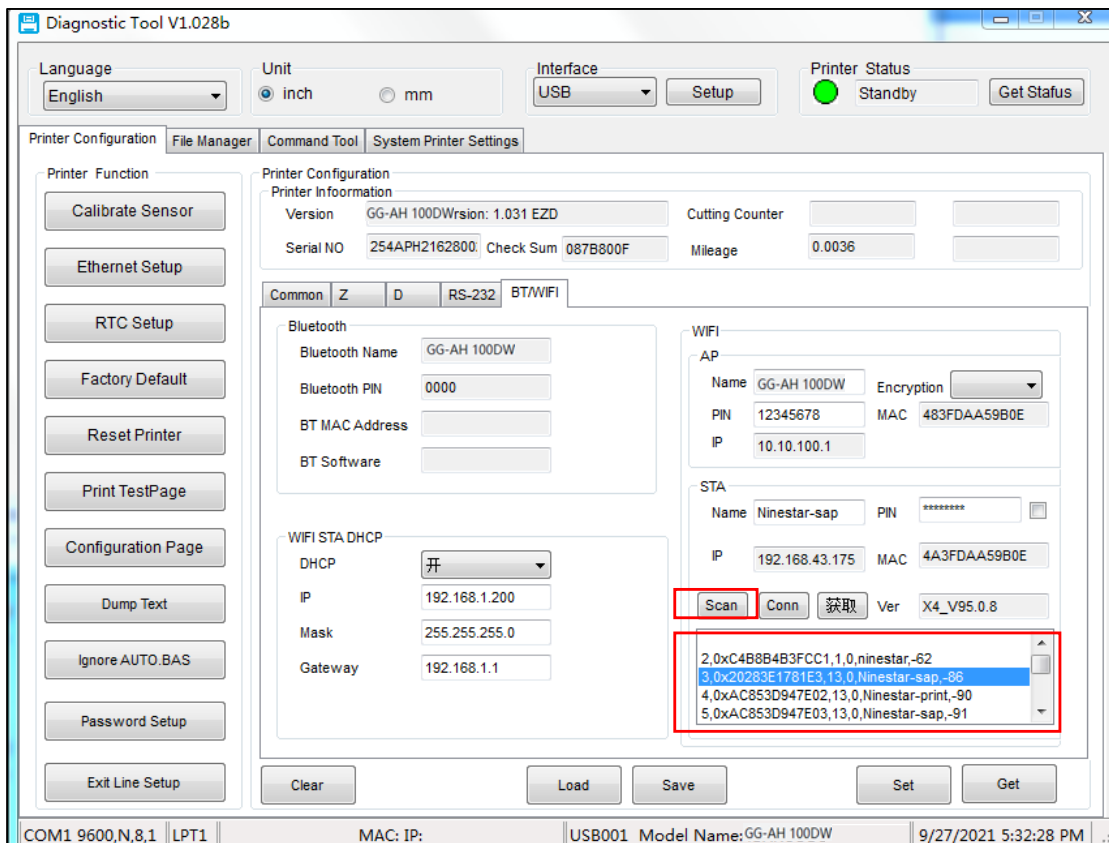
b) Open the *Diagnostic Tool*, in Printer Configuration page, choose *BT/WIFI* setting.



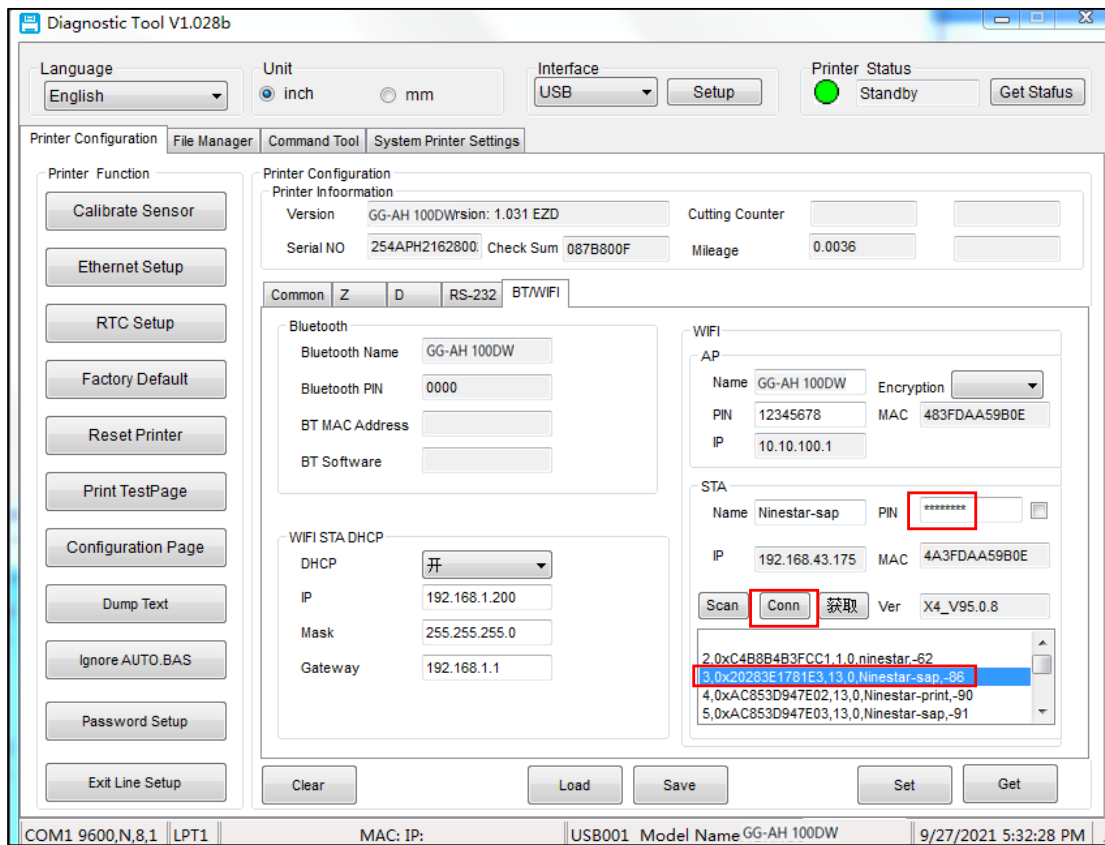
c) Click Get on the bottom right .The Diagnostic Tool will get wireless network parameters.



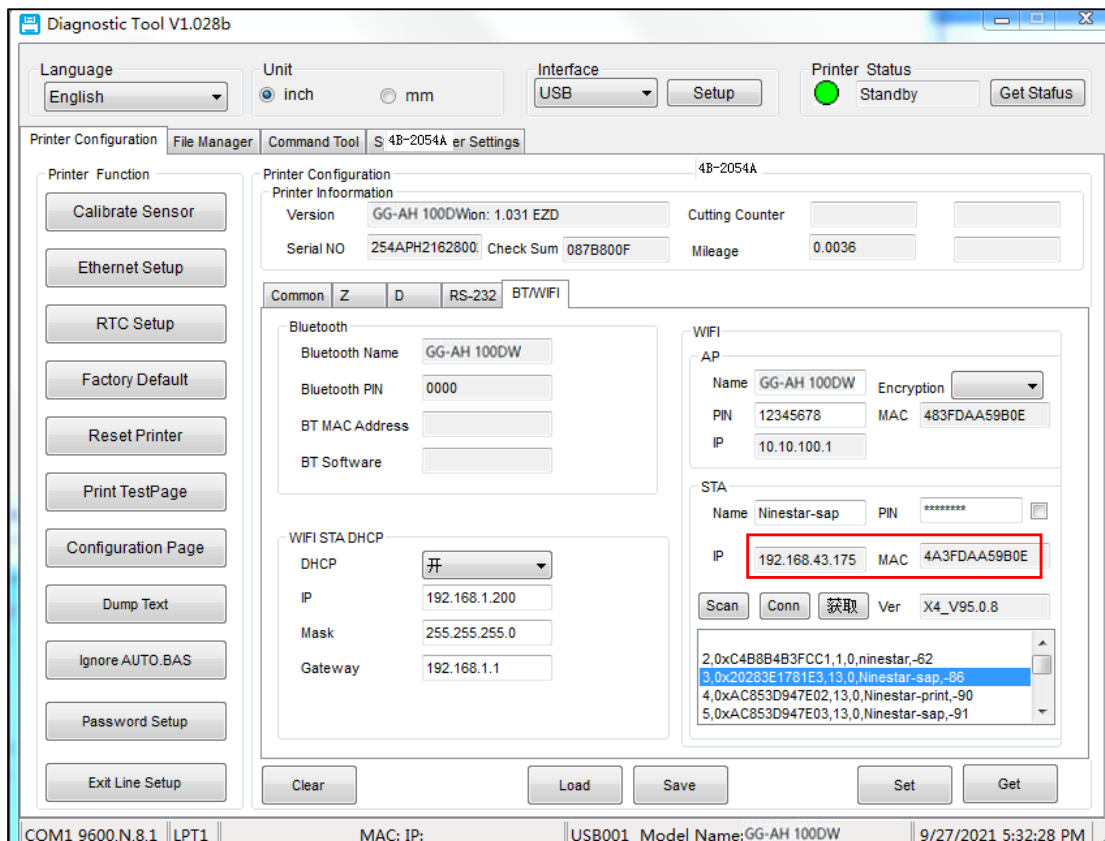
d) Click scan, printer will automatically scan nearby wireless networks.



e) Select the wireless network you want to join, enter the password, and click Connect.

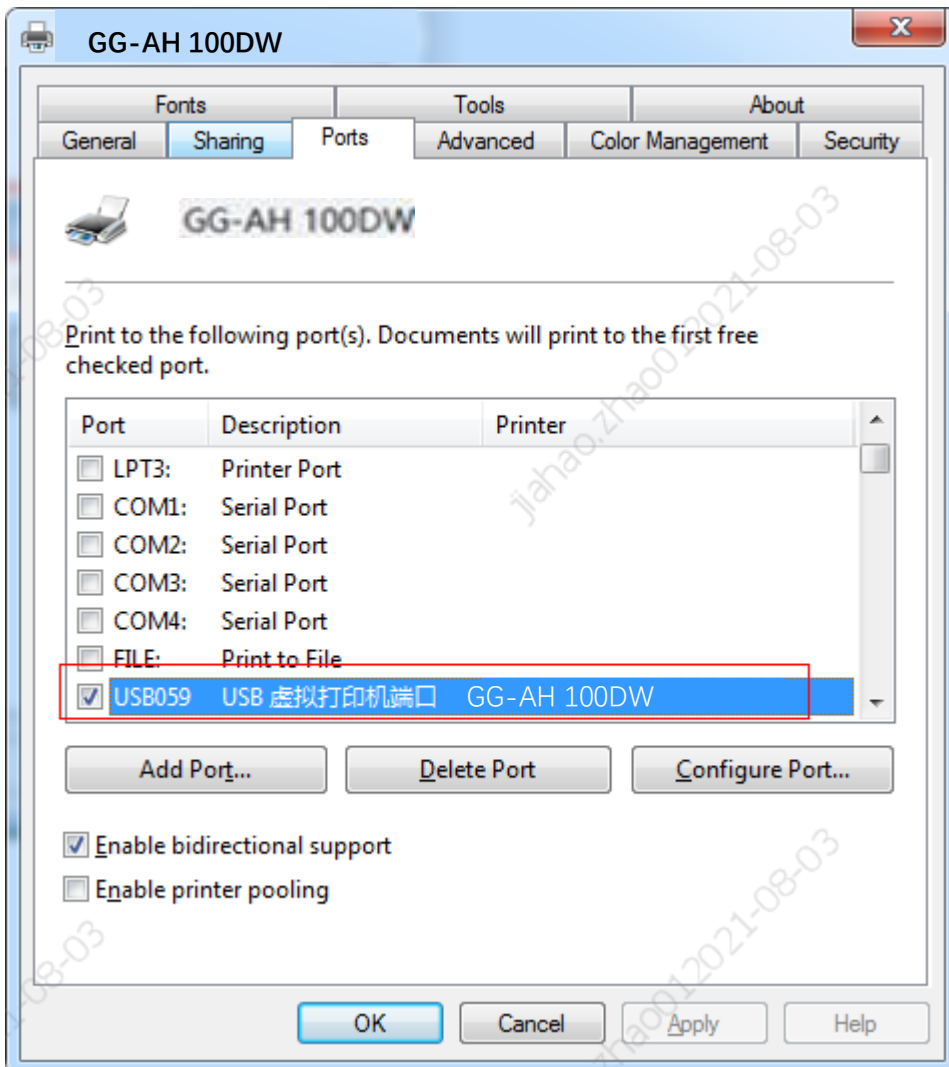
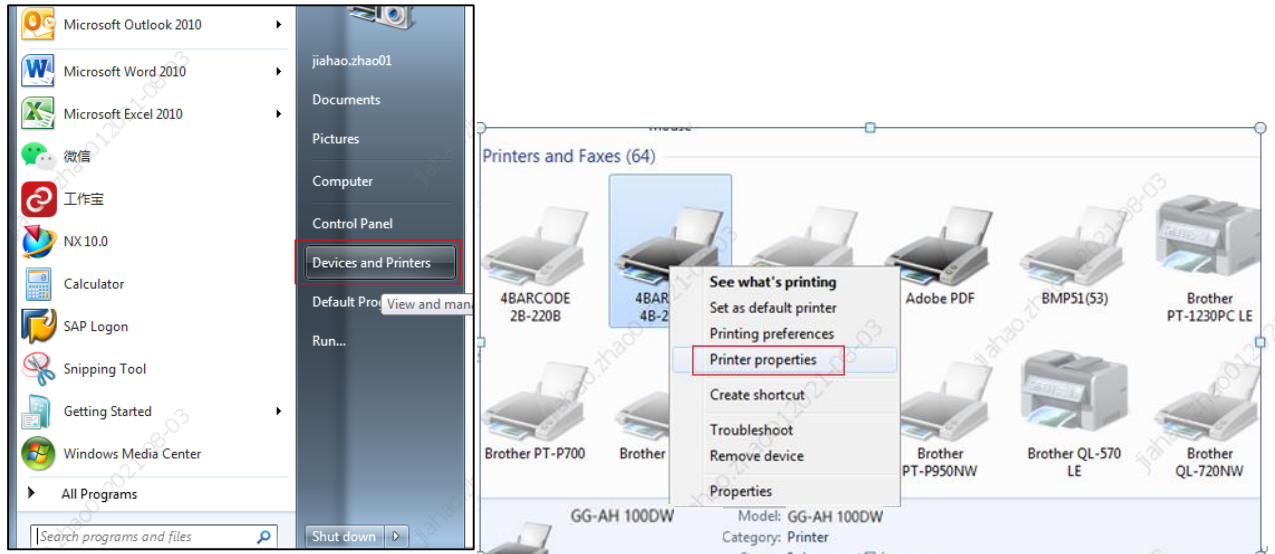


f) IP Choose IP address bar Return to the IP address to search for and enter the corresponding IP address.

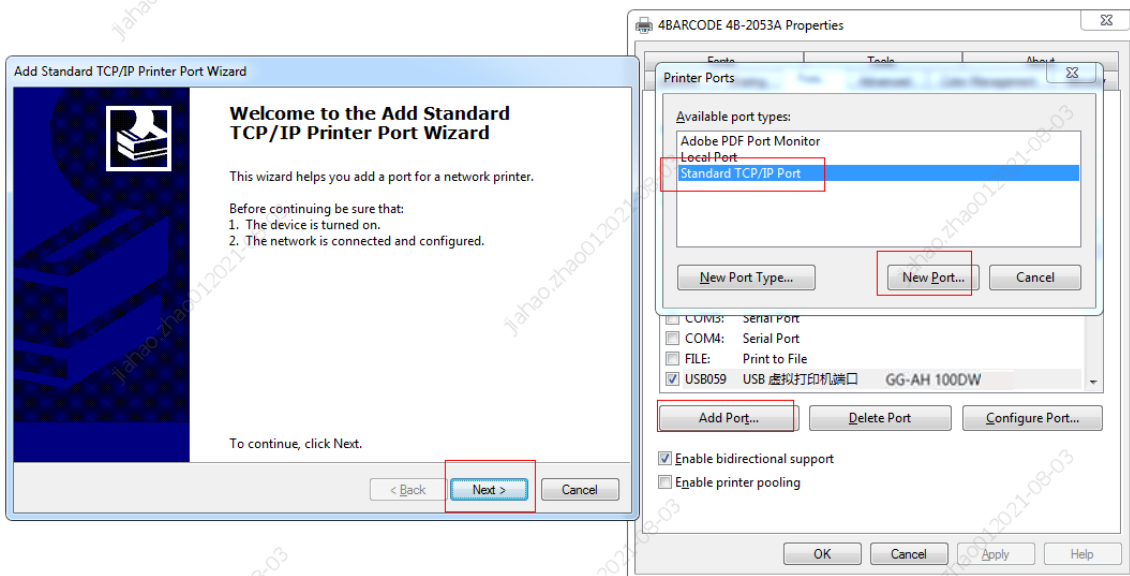


II. Set up the driver to connect to the printer over a wireless network.

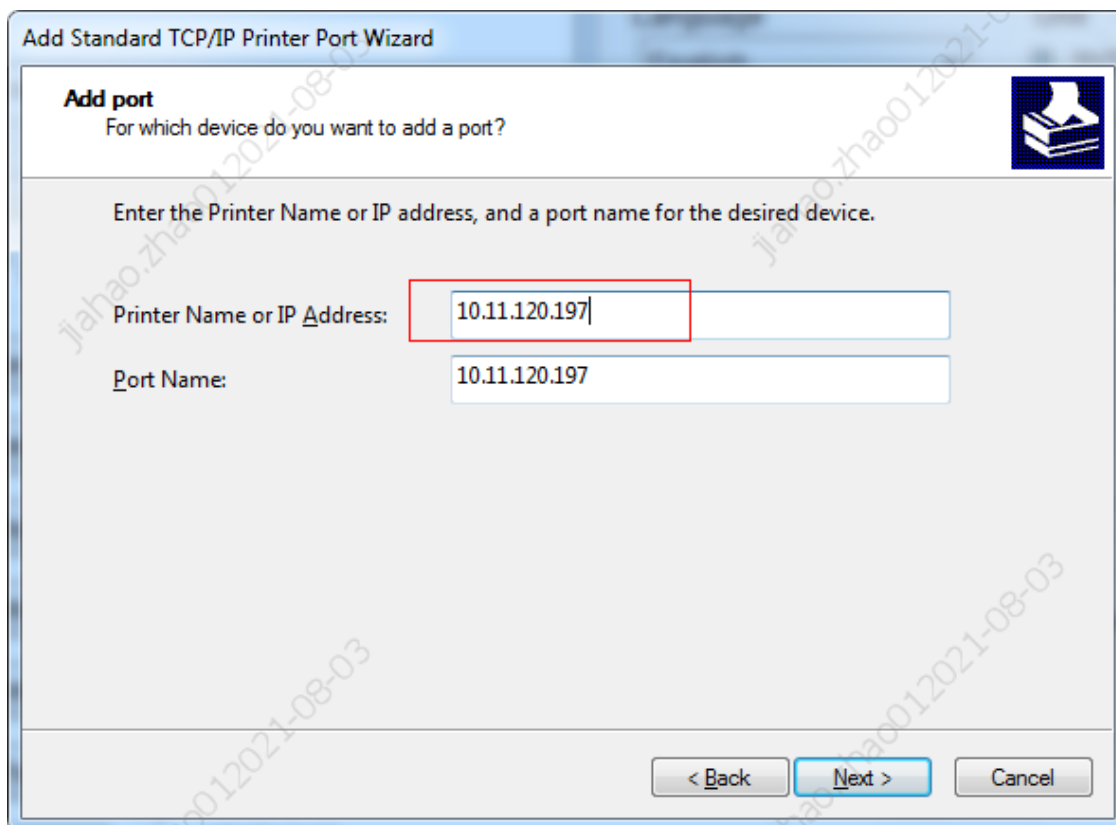
On the Printer Management page, open printer properties and select ports.



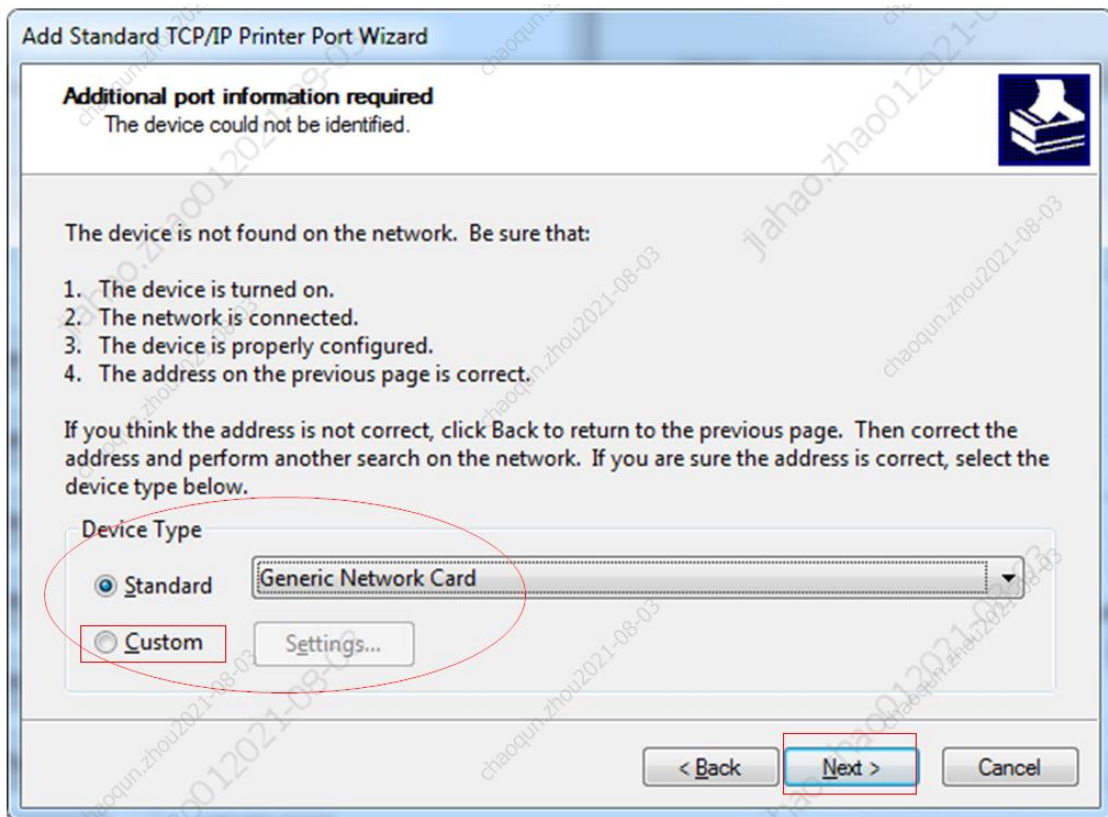
Select Add Port.



Click Next. Enter the IP address and port name. The IP address read by the Diagnostic Tool.



During the driver connection, a page will appear indicating that the device cannot be connected. Please select user-defined device type and click Next to complete the driver connection.



While the connection is successfully added, you can print using Bartender editing software.
