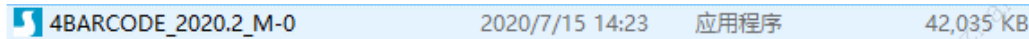


# General purpose driver installation instructions or USB connection method

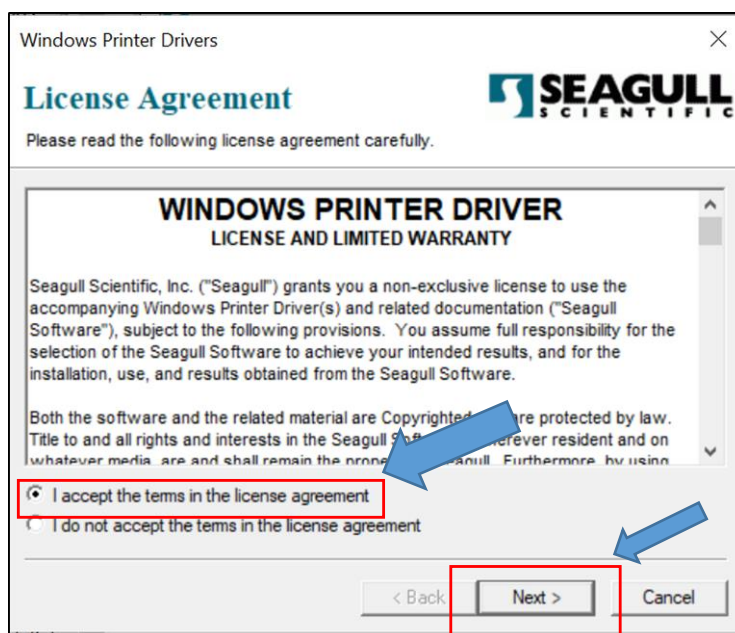
(GG-AT 80DW, GG-AT 90DW, GG-AH 100DW, GG-AT-60P)

I. Install the printer driver on the PC.

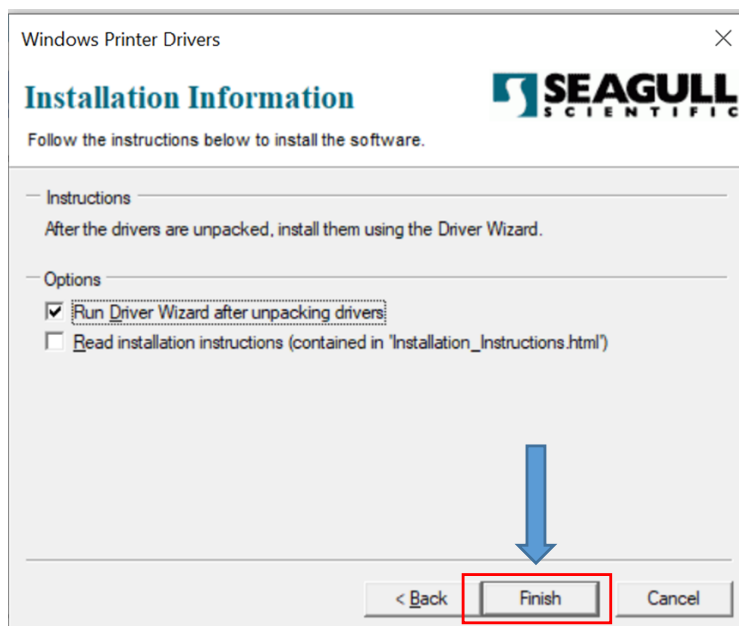
Click open 4BARCODE\_2020.2\_M-0



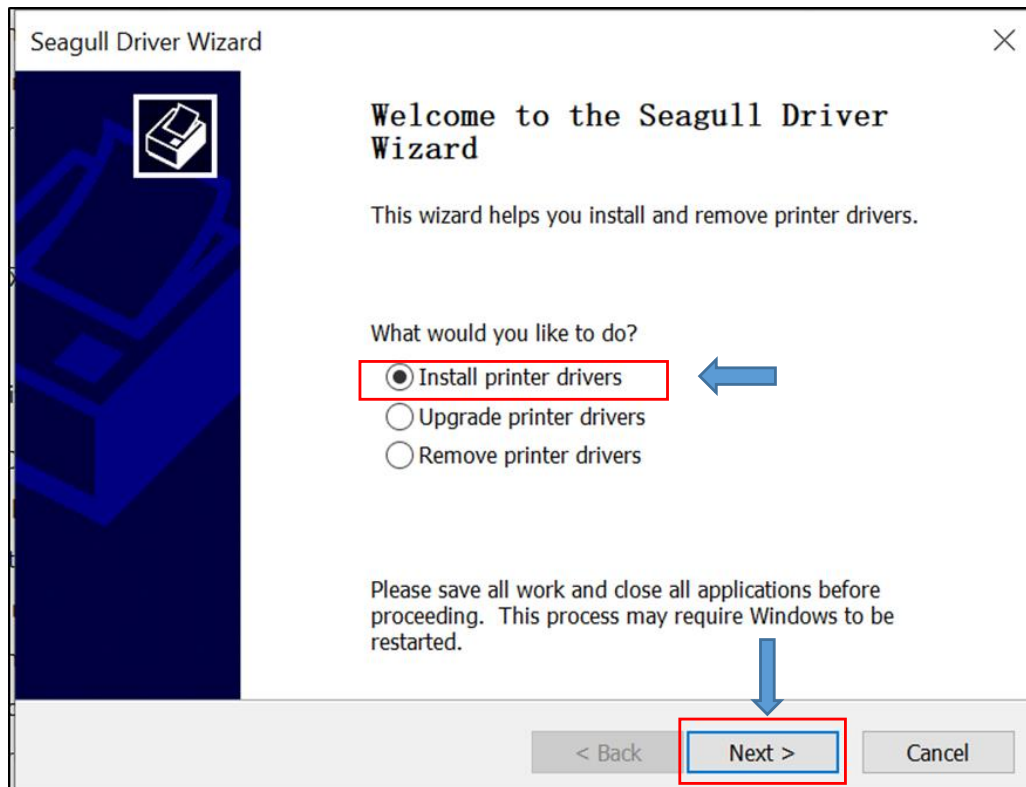
Choose I accept the terms in the license agreement, click next



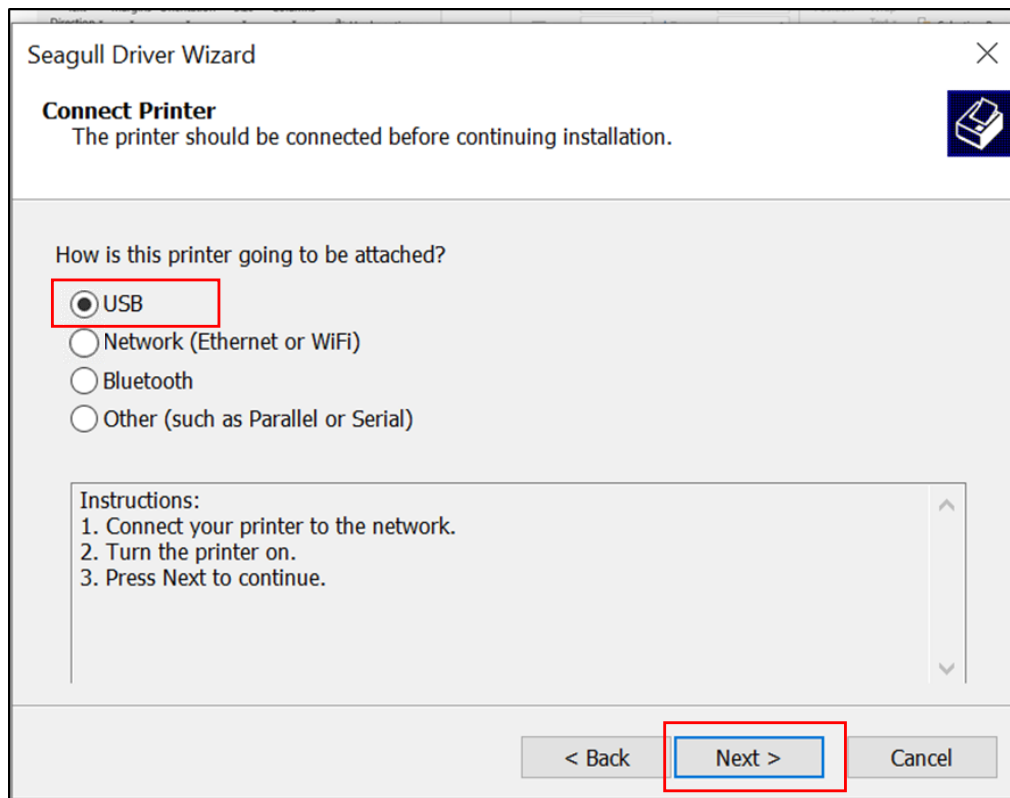
Continue clicking on "Next" until the installation is finished.



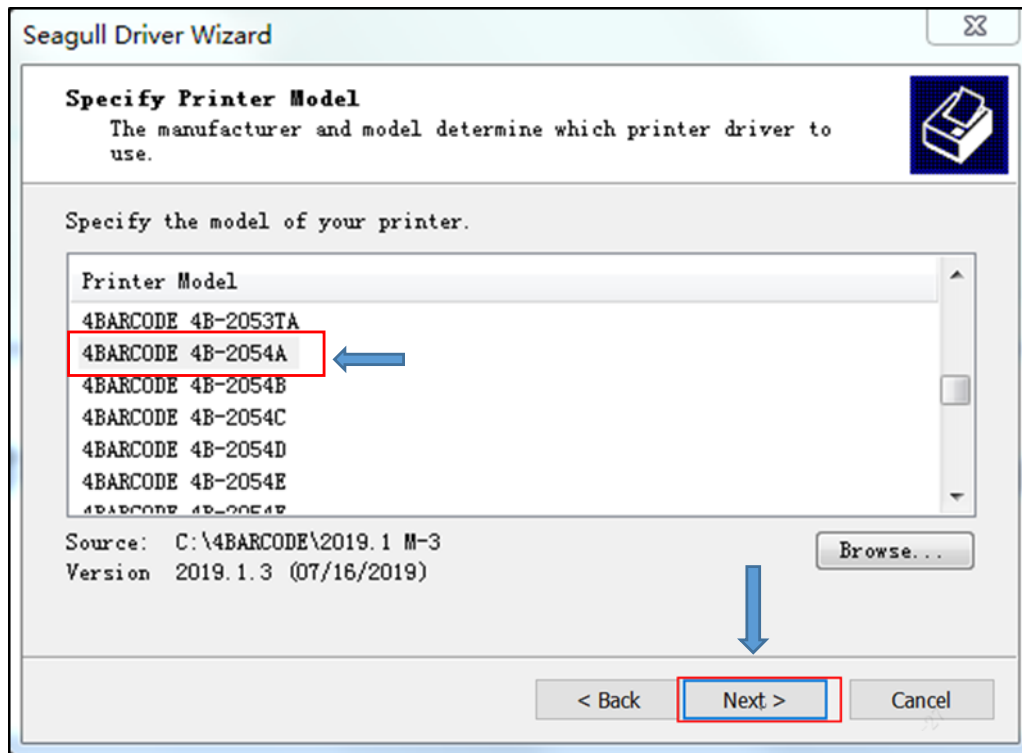
Wait until the decompression is completed, click Install printer driver, click Next



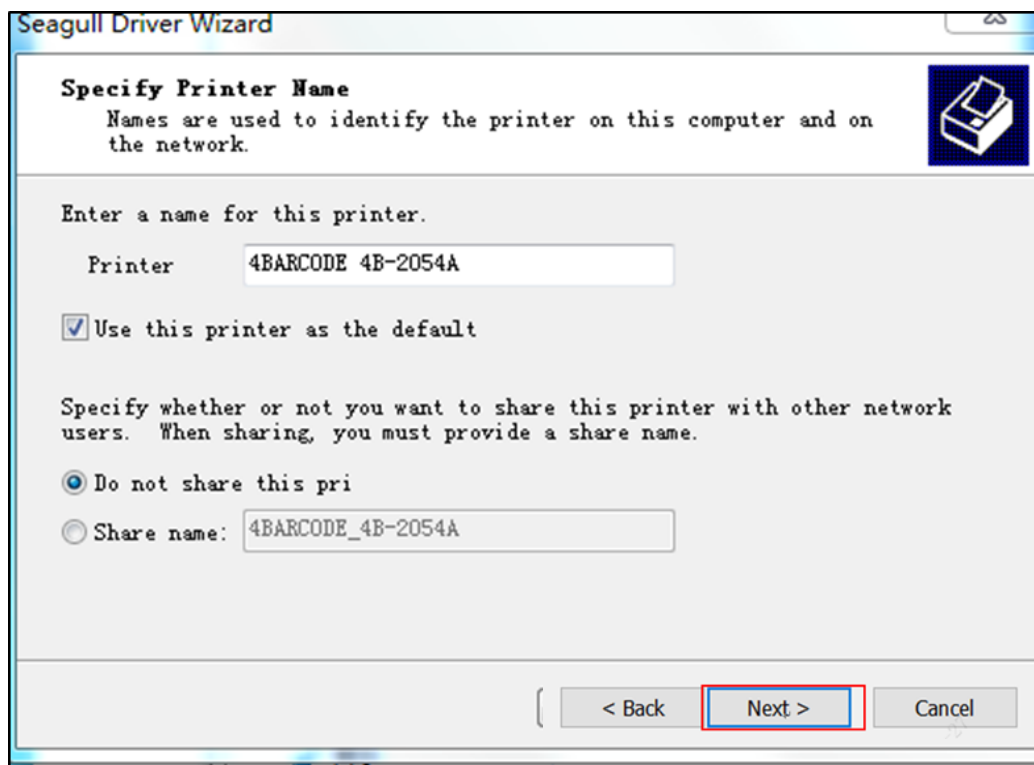
Select USB connection, connect computer and printer with USB line, turn on printer power. It will automatically detect the printer connected to the computer.

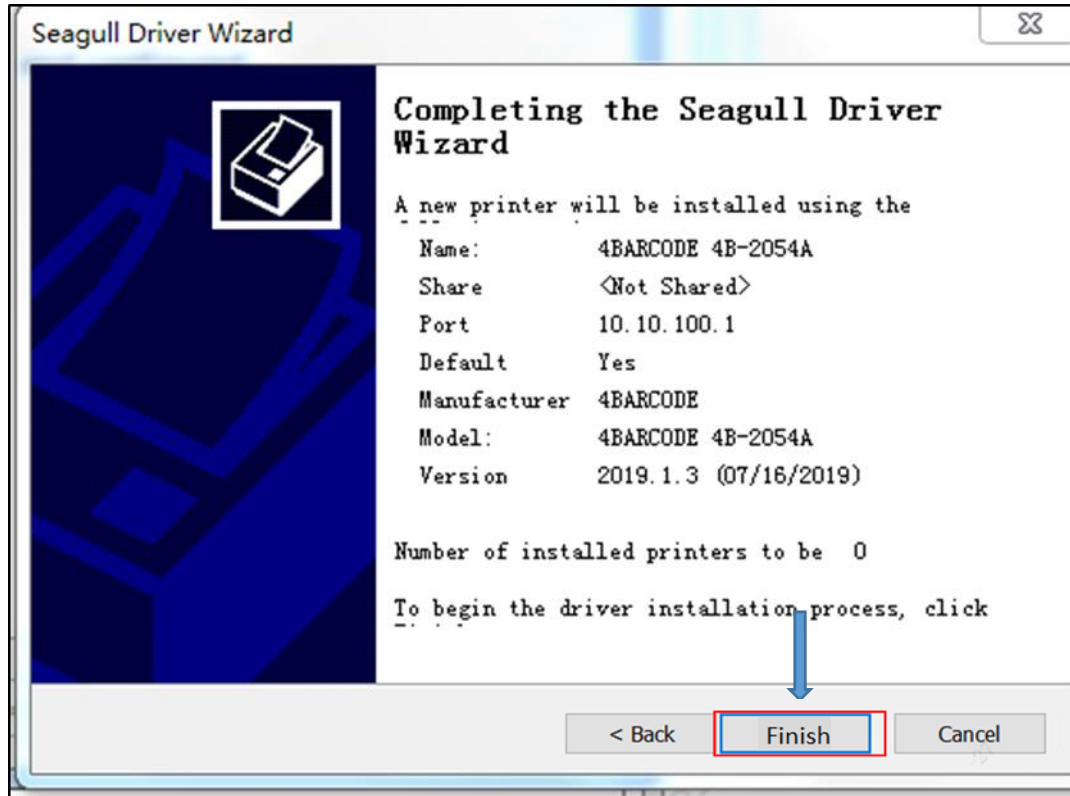


Select the printer according to the actual machine number (which can be viewed on the back label of the machine )



Continue clicking on "Next" until the installation is finished.





Display driver installation is complete.